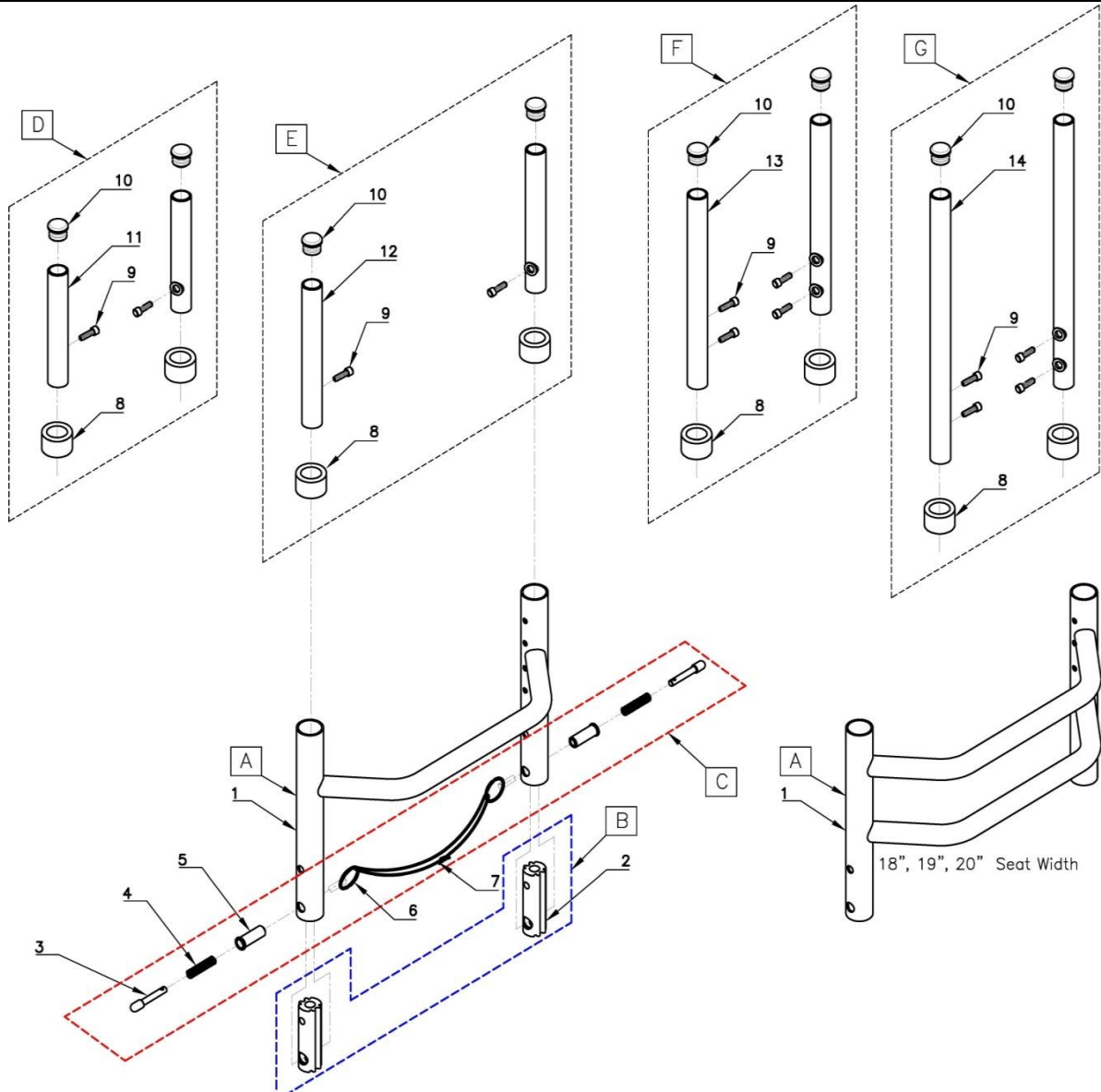


BACKREST



18", 19", 20" Seat Width

POS	Assy #	#	Parts #	QTY	Color	Remark	MSRP	NOTE
A	-	1	0473-300	1	Blk	10" Seat Width	per 1pcs	1pcs/chair
			0473-301	1	Blk	11" Seat Width	per 1pcs	1pcs/chair
			0473-302	1	Blk	12" Seat Width	per 1pcs	1pcs/chair
			0473-303	1	Blk	13" Seat Width	per 1pcs	1pcs/chair
			0473-304	1	Blk	14" Seat Width	per 1pcs	1pcs/chair
			0473-305	1	Blk	15" Seat Width	per 1pcs	1pcs/chair
			0473-306	1	Blk	16" Seat Width	per 1pcs	1pcs/chair
			0473-307	1	Blk	17" Seat Width	per 1pcs	1pcs/chair
			0473-308	1	Blk	18" Seat Width	per 1pcs	1pcs/chair
			0473-309	1	Blk	19" Seat Width	per 1pcs	1pcs/chair
0473-310	1	Blk	20" Seat Width	per 1pcs	1pcs/chair			
B	-	2	0473-100	2	Sil	Backrest Insert	per 1pc	2pcs/chair
C	1900-01C	3	0478-120	2	Sil	Pull Pin Plunger	per Set	1set/chair
		4	0478-110	2	Sil	Pull Pin Spring		
		5	0478-100	2	Sil	Pull Pin Plunger Sleeve		
		6	0478-130	2	Sil	Pull Pin Ring		
		7	0476-302	1	Blk	Pull Pin Lanyard		
D	1900-01D	8	0082-300	2	Blk	Plastic Slip Fit Bushing	per Set	1set/chair
		9	0261-300	2	Sil	#10-32 L:1/2" SHCS		
		10	0077-300	2	Blk	Plastic Tubing End Cap		
		11	0038-310	2	Sil	9", 10", 11", 12" Height		
E	1900-01E	8	0082-300	2	Blk	Plastic Slip Fit Bushing	per Set	1set/chair
		9	0261-300	2	Sil	#10-32 L:1/2" SHCS		
		10	0077-300	2	Blk	Plastic Tubing End Cap		
		12	0038-311	2	Sil	13", 14", 15", 16" Height		
F	1900-01F	8	0082-300	2	Blk	Plastic Slip Fit Bushing	per Set	1set/chair
		9	0261-300	4	Sil	#10-32 L:1/2" SHCS		
		10	0077-300	2	Blk	Plastic Tubing End Cap		
G	1900-01G	8	0082-300	2	Blk	Plastic Slip Fit Bushing	per Set	1set/chair
		9	0261-300	4	Sil	#10-32 L:1/2" SHCS		
		10	0077-300	2	Blk	Plastic Tubing End Cap		
		14	0038-313	2	Sil	20", 21", 22" Height		